

LSR4300

S E R I E S

L S R 4 3 2 8 P

L S R 4 3 2 6 P

L S R 4 3 1 2 5 P



Stunning sound and revolutionary intelligence
to analyze and correct the problems in any room.

LSR4300

S E R I E S

The biggest challenge for anyone producing audio is creating a mix that sounds great on all playback systems. Much of the problem is caused by the mixing room interacting with the studio monitors and creating an inaccurate picture at the mix position. JBL Professional, continuing its long tradition of revolutionary products, decided it was time to fix the problem.

music

post

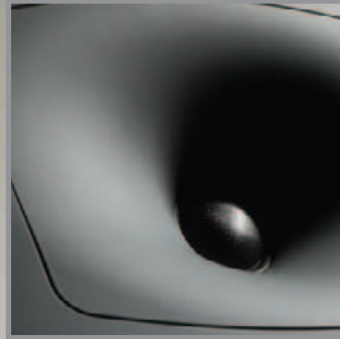
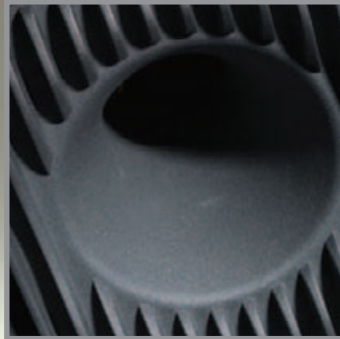
broadcast



Introducing the new JBL LSR4300 Studio Monitors featuring RMC™ Room Mode Correction, JBL's exclusive technology that automatically analyzes and corrects the response of each speaker in the room for absolute accuracy at the mix position. The first studio monitors with powerful network intelligence built into each speaker specifically designed to deliver an accurate mix in any room, the LSR4300's are the ultimate monitor for modern production studios. The LSR4300 models feature stunning JBL sound, provide accurate mixes in any workspace, and are priced well within the reach of any project studio. The first self aware monitoring system, they're the only choice for music, post, broadcast, Surround 5.1, and beyond.

Stunning sound and revolutionary intelligence
to analyze and correct the problems in any room.

STUNNING SOUND



**Engineered to
deliver the stunning
sound that is the
hallmark of all
JBL Professional
products.**

Recording and mixing for long hours requires a superb sounding monitor with wide dynamic range, low distortion, and crystal clear response. The LSR4300 delivers. Starting with application built transducers engineered for extremely accurate response and superb power handling, the 4300's stunning sound makes long mix sessions a pleasure. For long-term reliability, the LSR4300 Series withstood the JBL loudspeaker torture test in which the system is driven to extraordinary levels for over 100 hours. Meeting higher standards than any other loudspeaker manufacturer, JBL's demanding test ensures that the LSR4300's will give you accurate mixes year after year.



Beyond Accurate

Great mixes start with an accurate monitor. The 4300 Series incorporates JBL's Linear Spatial Reference Technology that matches the exact geometry of the 4300's waveguide design with its transducers and crossover network to optimize the frequency response at the mix position. To ensure that this incredibly accurate monitor delivers superb mixes in the room you're working in, JBL's next generation RMC™ Room Mode Correction system incorporates a powerful analyzer into each speaker that automatically analyzes and compensates for problems caused by low frequency standing waves and

proximity to boundaries. Truly putting technology to work, all of this is accomplished by simply plugging the LSR4300 calibration microphone into the speaker and pushing a button. A JBL first, the LSR4300 meter provides a reference of the output from each speaker in the system. The results are a revolution in professional mixing: a calibrated listening environment where the monitors truly work in harmony with the room. This creates a stunningly clear and articulate sound stage enabling reliable mixes that translate faithfully to the outside world.

Engineered for Digital Production

Today's digital production environments are all about precision and control. The LSR4300's powerful DSP platform provides full system networking and communication. Comprehensive LSR4300 Control Center Software provides total control of all system parameters directly from the workstation desktop. High resolution digital and analog inputs, plus a 'virtual monitor section' with input switching, master volume, mute and solo controls, enhance functionality of the entire system and provide comprehensive control at the mix position. The first professional studio monitor with automatic room compensation, centralized system control, and user-friendly simplicity, the LSR4300 Series is the most elegant and intelligent advancement of technology on behalf of better mixes ever offered in a studio monitor.



Surround Smart

The LSR4300 Series includes three models: The LSR4326P bi-amplified system with 6" woofer and 1" dome tweeter; the LSR4328P bi-amplified system with 8" woofer and 1" domed tweeter, and the LSR4312SP, 300 watt, powered 12" subwoofer. Designed for any application from simple stereo mixing to complex surround production, LSR4300 Series systems can be configured with up to eight main speakers in any desired mix of 6" and 8" models and two subwoofers. Since the small studio may lack the space to position surround channels at the optimal physical distance from the mix position, the system is automatically aligned so the sound arriving at the mix position from all speakers is synchronized producing a precise image regardless of each speaker's actual physical placement.

A system configured with the LSR4312SP subwoofer provides professional bass management of the main channels, plus LFE (low frequency effects) input, adjustable crossover points, and powerful features for surround sound production.



System Intelligence



Control of System Level, Individual Speaker SOLO, Input Source Selection, high and low frequency EQ settings, and adjustment of all parameters can be made from each speaker's front panel, with the system's infrared remote control, or with LSR4300

Control Center Software. For unprecedented performance and convenience the LSR4300 Series incorporates the new Harman HiQnet™ protocol that enables a coordinated calibration of all speakers, intelligent configuration of surround sound systems, and synchronized control of all speakers in the system.

Reinforced for Mounting

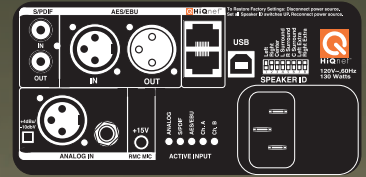
Reinforced mounting points on each speaker allow convenient positioning and installation of multi-channel surround systems for any mixing application, in any environment.

Specifications



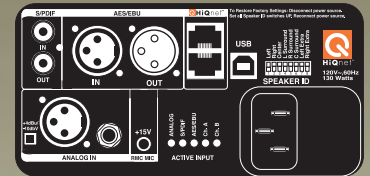
L S R 4 3 2 8 P

Frequency Response	+/-1.5 dB: 50 Hz - 20 kHz
	-3 dB: 43 Hz - 22 kHz
	-10 dB: 35 Hz - 32 kHz
SPL / 1 m (Continuous/Peak)	106 dB / 112 dB
Transducers (LF, HF)	8" 438H / 1" 431G; Self-Shielded
	Neodymium Motor Structures
Sensitivity +4 dBu, -10 dBV	96 dB / 1 m
Amplification (LF, HF)	150w / 70w
Digital Processing	24 Bit, 96 kHz
Analog Inputs	XLR, 1/4" Balanced, +4 dBu, -10 dBV
Digital Inputs	AES/EBU XLR, S/PDIF RCA
Data Connections	Harman HiQnet™ Network, USB, RMC Mic
Weight	13.1 kg (29 lb)
Dimensions (H x W x D)	438 mm x 267 mm x 269 mm
	17.25 in x 10.5 in x 10.6 in



L S R 4 3 2 6 P

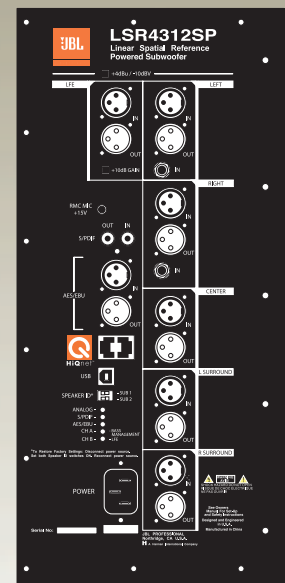
Frequency Response	+/-1.5 dB: 55 Hz - 20 kHz
	-3 dB: 47 Hz - 22 kHz
	-10 dB: 39 Hz - 32 kHz
SPL / 1 m (Continuous/Peak)	106 dB / 112 dB
Transducers (LF, HF)	6.25" 436H / 1" 431 G; Self-
	Shielded, Neodymium Motor Structures
Sensitivity +4 dBu, -10 dBV	96 dB / 1 m
Amplification (LF, HF)	150 w / 70 w
Digital Processing	24 Bit, 96 kHz
Analog Inputs	XLR, 1/4" Balanced, +4 dBu, -10 dBV
Digital Inputs	AES/EBU XLR, S/PDIF RCA
Data Connections	Harman HiQnet™ Network, USB, RMC Mic
Weight	12.7 kg (28 lb)
Dimensions (H x W x D)	387 mm x 236 mm x 262 mm
	15.25 in x 9.3 in x 10.3 in



L S R 4 3 1 2 S P *

Frequency Response	+/- 3 dB: 28 Hz - 2 kHz
	-10 dB: 25 Hz
SPL / 1 m (Continuous/Peak)	105 dB / 108 dB
Transducers	12" 432G; Self-Shielded,
	Ferrite Motor Structure
Sensitivity +4 dBu, -10 dBV	96 dB / 1 m
Amplification	300 w
Digital Processing	24 Bit, 96 kHz
Analog Inputs: L, C, R, L	Six XLR, Two 1/4", Balanced, +4 dBu, -10
Surround, R Surround, LFE	dBV, LFE +10 dB Gain
Digital Inputs	AES/EBU XLR IN, OUT; S/PDIF RCA IN, OUT
Data Connections	Harman HiQnet™ Network, USB, RMC Mic
Weight	31.7 kg (70 lb)
Dimensions (H x W x D)	501 mm x 406 mm x 495 mm
	19.75 in x 16 in x 19.5 in

*Preliminary Specifications



LSR4300 Control Center Software

System Requirements:

Hard Drive: 100MB Space Available

RAM: 128MB Minimum

Windows:

OS: Windows 2000, XP

CPU: P3 750 MHz

www.jblpro.com

8500 Balboa Boulevard,
Northridge, CA 91329 USA

© 2005 JBL Professional



Integrated mounting points for use with industry standard mounting hardware.**

**Caution: Unsafe mounting or overhead suspension of any heavy load can result in serious injury and equipment damage. Mounting of speakers should be done by qualified persons in accordance with all applicable local safety and construction standards.



H A Harman International Company

CAT LSR4300

8/05